

# eakin **Cohesive**<sup>®</sup> large for managing significantly excoriated skin

Case study submitted by:

Alexandra Esteban, Stoma Care Nurse, CHG Hospital, Montauban, France

## Background

- 66 year old lady.
- Bedridden with an emergency colostomy due to an obstructive episode.
- March 2022 - Hospitalized in the digestive surgery department where stoma care was managed.
- Stoma routine consisted of 2-piece Coloplast Sensura Mio flat drainable pouch - 70mm, and Brava remover spray.
- Upon hospital discharge, the patient stayed in an elderly care unit where she was reliant on care staff to manage her stoma.

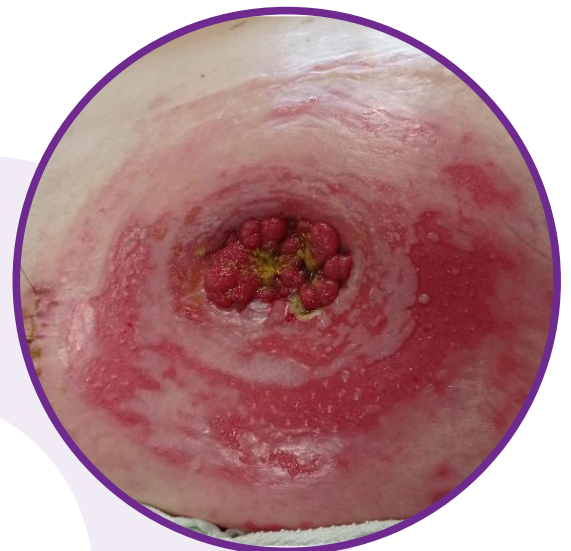
## Problems Experienced

- Unskilled carers resulting in the patient's stoma care routine being incorrectly managed, contributing to persistent leaks.
- In addition, carers not available at night if pouch leakages occurred.
- Pouch leakages resulted in significant peristomal maceration.
- Numerous appliances and accessories were trialled with no improvement in peristomal skin integrity.

## Nurse Advice

Following trial of many ostomy brands, **eakin**<sup>®</sup> was presented as a solution for the peristomal skin problems and to achieve a secure longer term routine.

Due to the ease of use of the products and skin friendliness, eakin **dot**<sup>®</sup> 2-piece drainable soft convex - 80mm, eakin **Cohesive**<sup>®</sup> large seal, eakin **contour**<sup>™</sup> flange extenders, eakin **Cohesive**<sup>®</sup> paste and an ostomy belt all formed part of this new routine.



## Solution with eakin Cohesive® large

Following guidance, the elderly care unit staff are now handling the lady's stoma care routine well and as a result there has been significant improvement.

**Skin:** Skin integrity has recovered from the peristomal maceration and no allergy to the products observed.

**Stoma Management:** No leaks observed and care team are confident in the management of the stoma care routine.

*"It is important and necessary to provide care protocols to health professionals or even to make photo montages in order to standardise professional practices as such preventing problems occurring."*

Alexandra Esteban



### eakin® product used

eakin dot® 2-piece 80mm baseplate	839830
eakin dot® standard drainable pouch	839922
eakin Cohesive® large	839001
eakin Cohesive® paste	839010
eakin contour™ flange extenders	839040
Adjustable ostomy belt	839520